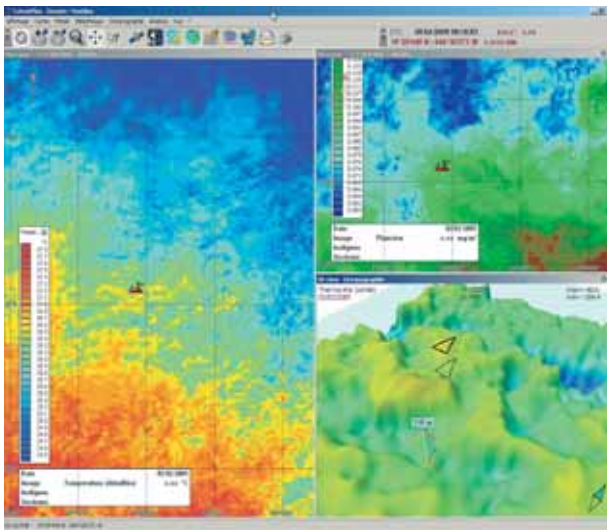




OCEANOGRAPHY
DATA DISTRIBUTION SERVICE

Catsat

LONG RANGE / MIDDLE RANGE / REGIONAL



Service includes

- One on board 3D software to visualize maps
- Nine types of oceanography data corresponding to your fishing zones
- Help desk on-line

Oceanography data

- Altimetry: Sea level variation and associated geostrophic surface currents
- Surface global currents
- Sea surface color (plankton concentration)
- Sea surface temperature (detailed)
- Sea surface temperature (cloudless)
- Sub-surface Temperature (20, 30..., 300 meters depths)
- Thermocline (depth, intensity and current shears)
- Salinity (0, 20, 30..., 250 meters depths)
- Weather forecasts (7 days forecasts)

Data Characteristics*

Long Range/Middle Range/Regional Fisheries

Altimetry	Maps of sea level variations and associated geostrophic surface currents. Products calculated from radar sensors measurements. Products available what ever cloud cover is.
Surface global currents	Global sea surface currents issued from ocean model.
Sea surface temperature (detailed)	Maps of sea surface temperature. Infrared radiometers measurements exclusively available without cloud cover.
Sea surface temperature (cloudless)	Maps of sea surface temperature. Microwave sensor measurements available with cloud cover.
Sea surface color	Maps of sea surface chlorophyll concentration. Visible radiometers measurements exclusively available without cloud cover
Sub-surface temperature	Water Temperature at 10 different depths: 20, 30, 50, 75, 100, 125, 150, 200, 250 and 300 meters deep.
Thermocline	Accurate description of the thermocline including three parameters: thermocline depth, thermocline gradient and shear current at thermocline depth.
Sub-surface salinity	Salt concentration from oceanographic models at 10 different depths: 0, 20, 30, 50, 75, 100, 125, 150, 200 and 250 meters deep.
Weather forecasts	One to 7 days forecast maps of pressure, surface wind and swell.

* Data characteristics are subject to change without prior notice

Data Distribution Schedule

Tuesdays and Fridays at 13:00 UTC	All oceanographic data
Sundays at 13:00 UTC	Sea surface temperature and sea surface color
Every day at 13:00 UTC	Weather forecasts

Geographical coverage

Long Range	20 maps maximum of 10°x10° size to be selected according to your fishing area
Middle Range	10 maps maximum of 10°x10° size to be selected according to your fishing area
Regional Fisheries	4 maps maximum of 10°x10° size to be selected according to your fishing area

Onboard minimum requirements

Satellite communication	Inmarsat B / M / FLEET 33 / FLEET 55 / FLEET 77, EMSAT, Iridium
GPS receiver	NMEA interface
Onboard PC	OS Windows 2000/NT/XP Processor 1 GHz RAM 512 Mbytes Video Card 64 Mbytes COM and USB ports 2
Data link	Activated